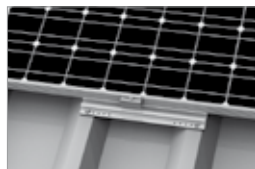
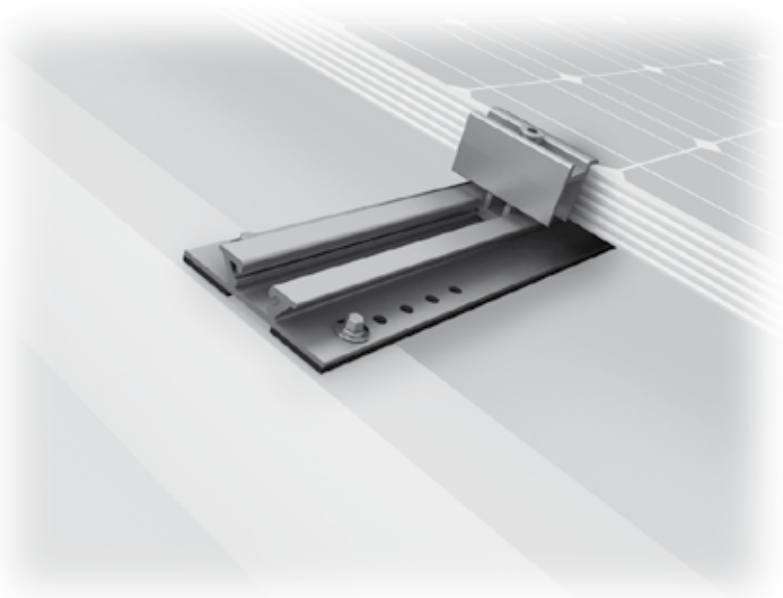


Mounting systems for solar technology



K2 SYSTEMS
PITCHED ROOF SYSTEMS
MINIRAIL SYSTEM

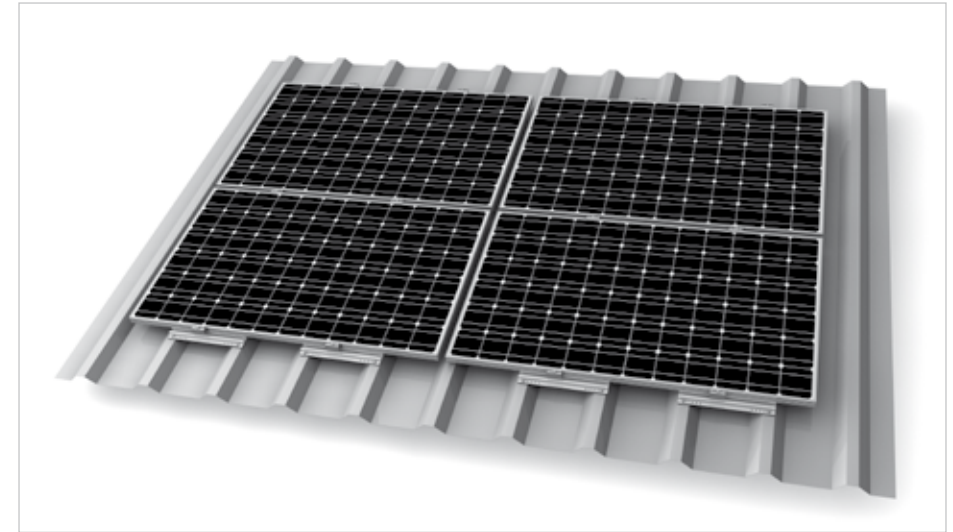
MINIRAIL SYSTEM

- K2 MiniRail System for trapezoidal sheet metal roofs
- Simple and extremely fast assembly from above
- Very attractive price-performance ratio
- High flexibility with adjustable clamp
- Suitable for all module frames (34-50 mm) and installation types (landscape and portrait), no additional components required, all included included in the set
- High level of planning security due to low number of simple system components
- Modular structure suitable for any system size
- Small components for optimal warehousing, transport and installation
- 1 Set MC contains: 40 rails incl. EPDM, 40 MC clamps pre-mounted; 170 drilling screws 6 x 25 with sealing washer
- 1 Set EC contains: 20 rails incl. EPDM, 20 EC clamps pre-mounted; 85 drilling screws 6 x 25 with sealing washer

Technical data



Field of application	Sloped roof with 5 ° - 65 ° roof pitch
Roofing	Minimum thickness of 0.5mm for steel sheeting and a minimum thickness of 0.8mm for aluminium sheeting bead spacing up to 175 and 200 - 350 mm, bead width min. 25 mm
PV modules	Suitable for all standard module types
Module orientation	Portrait / Landscape
Material	Aluminium (EN AW-6063 T66 / EN AW-6082 T6); EPDM
Connecting elements	Stainless steel screws A2-70, EPDM
Roof connection	Technically approved self-tapping screws
Static principles	Calculation principles in accordance with Eurocode 9 - dimensioning and construction of aluminium structures,
Load assumption in accordance with	DIN EN 1991 (Eurocode 1)
System components	K2 MiniRail Set



Detail illustration - MiniRail Landscape



Detail illustration - MiniRail for module frames 34 - 50 mm



Avenches - Switzerland
Installation: 50 kW | MiniRail System



Avenches - Switzerland
Installation: 50 kW | MiniRail System

SERVICE-HOTLINE
+49 (0)7152 3560-0
www.k2-systems.com

Produktblatt MiniRail | GB4 | 0613 | Subject to change
Product illustrations are exemplary illustrations and may differ from the original.

